



LET'S
BUILD THE

PONTIPINES'

MAKE YOUR OWN
PONTIPINES' HOUSE!

HOUSE

MATERIALS:

- 1 CEREAL BOX • 1 SHOE BOX OR SMALL CARDBOARD BOX • RULER • SCISSORS*
- GLUE OR STICKY TAPE • COLOURING PENCILS OR PENS •
- PRINT OUT OF OUR PONTIPINES' HOUSE TEMPLATE •
- PRINT OUT OF OUR FENCE TEMPLATE •
- 1 A4 SHEET OF GREEN PAPER OR GREEN PAINT FOR THE PONTIPINES' FRONT LAWN •

*MAKE SURE AN ADULT SUPERVISES LITTLE ONES USING SCISSORS



TOP TIP:

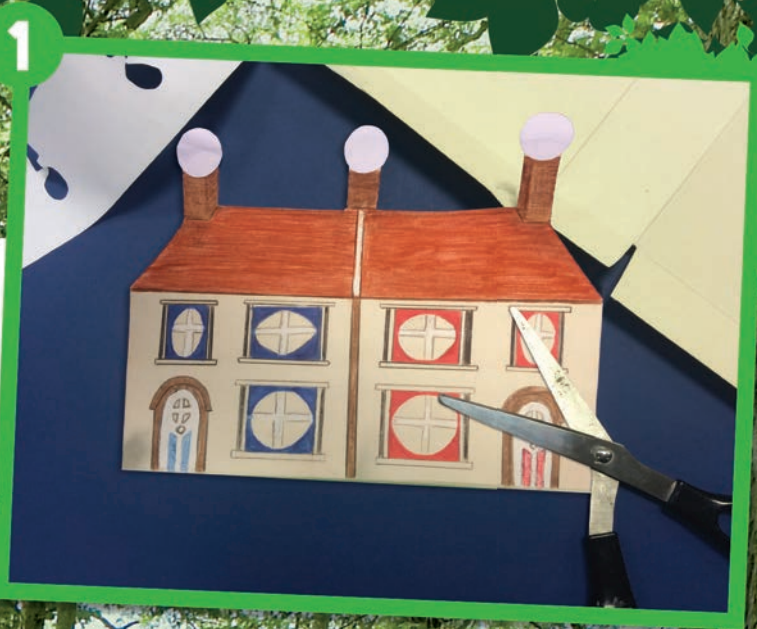


IF YOU WANT TO MAKE YOUR OWN
PEG PONTIPINES TO PUT IN THE HOUSE,
SEE OUR PONTIPINES HUNT WORKSHEET.

INSTRUCTIONS:



1. PRINT OUT THE PONTIPINES' HOUSE TEMPLATE AND COLOUR IN WITH YOUR LITTLE ONES! STICK THE COLOURED IN PONTIPINES HOUSE TEMPLATE TO YOUR CEREAL BOX (A) USING GLUE OR STICKY TAPE.



2. USING THE TEMPLATE AS A GUIDE, CUT OUT THE HOUSE FROM A CEREAL BOX. GLUE THE GREEN PIECE OF PAPER TO FLAP (B) CARD OF CEREAL BOX AND THAT WILL BE YOUR LAWN.

TOP TIP: MAKE SURE THE BOTTOM OF THE HOUSE IS ON A JOIN SO THAT YOU CAN STICK THE A4 SHEET OF GREEN PAPER TO THE CARD (B) CREATING THE PONTIPINES' FRONT LAWN. THIS WAY IT WILL FOLD UP LIKE A BOOK AND WILL STAND UP EASILY.



3. CUT OUT THE GARDEN FENCE TEMPLATES AND GLUE OR STICK WITH TAPE TO THE BASE OF THE LAWN.



4. ATTACH YOUR FINISHED HOUSE TO A SMALL SHOE BOX (C) OR CARDBOARD BOX AND YOUR HOUSE IS COMPLETE! AS A FINISHING TOUCH, YOU COULD CUT OUT OR COLOUR IN THE PONTIPINES PATH LEADING TO THE FRONT DOOR!

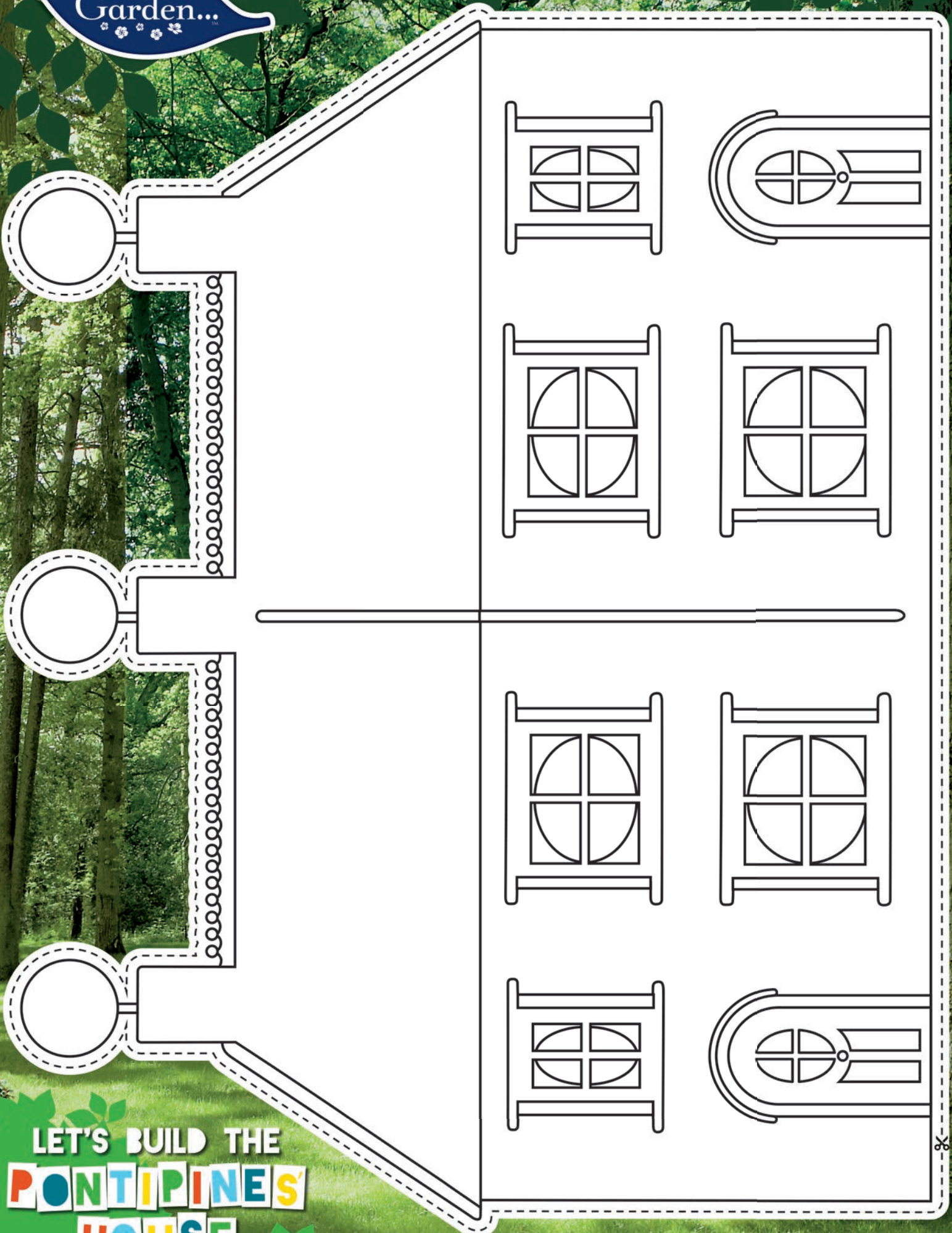


WE LINED OUR SHOE BOX WITH BROWN PAPER AND FILLED WITH TISSUE PAPER TO MAKE A BED FOR OUR HOMEMADE PONTIPINES.

LET'S BUILD THE
PONTIPINES'
HOUSE



PONTIPINES HOUSE TEMPLATE

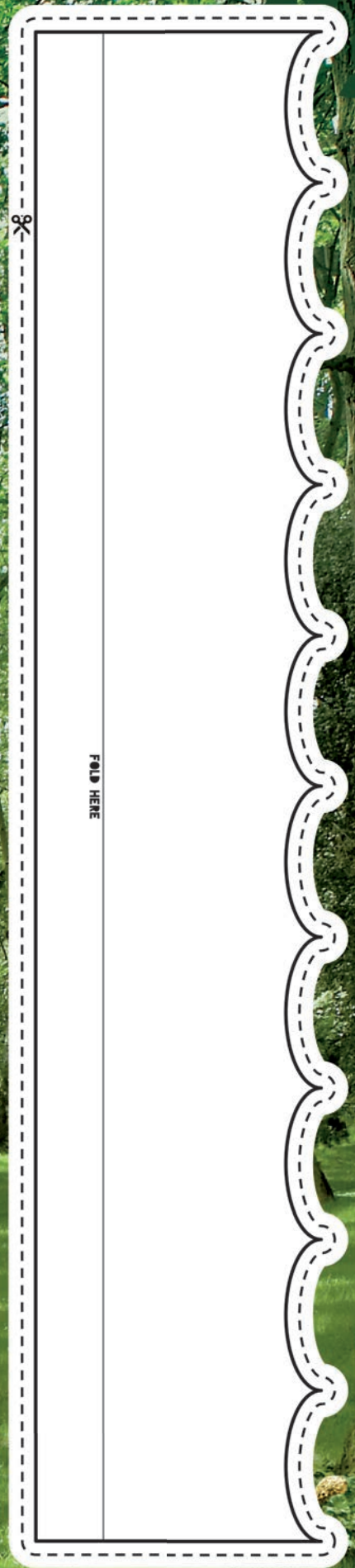
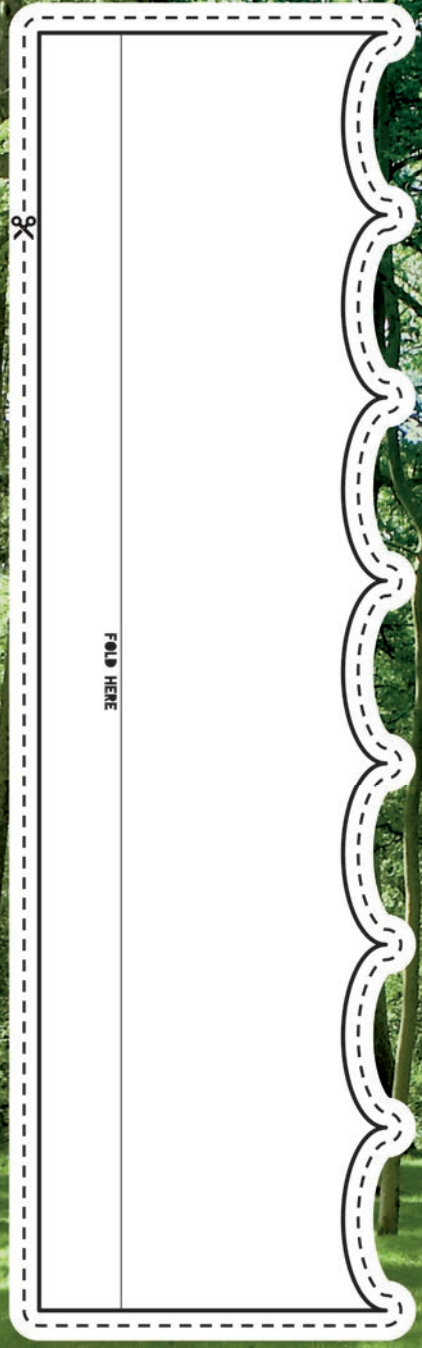


LET'S BUILD THE
PONTIPINES
HOUSE





GARDEN FENCE TEMPLATE



LET'S BUILD THE
PONTIPINES'
HOUSE